

2.0 系統剪髮流程  
Systemic Cutting Flow

步驟 1 剪 →

**Cutting**  
Series Scissors  
剪髮器 垂直層次與輪廓用  
Cut the layers and contour line by using ...  
4V x 2

OR

4V + 4E

步驟 2 調 →

**Texturizing**  
Series Scissors  
剪髮器 調整髮量用  
Texturize the hair volume by using ...  
4Ea + 4Eb + 4Ec

步驟 3 塑 →

**Styling**  
Series Scissors  
剪髮器 夾感及特殊效果用  
Display the definite hair fragmental effect or special effects by using ...  
4Ed + 4Ee



髮尾輕柔效果  
Light hair ends effects



Bob & Geometric effects  
髮尾豐厚效果



剪髮輕鬆有效率  
髮型完美不變形  
Cutting hair is Easy and Efficient  
A perfect and long-lasting hairstyle  
( SUZUKI PIONEER LINE )



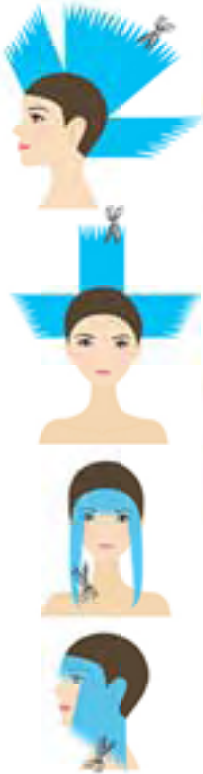
### 3.1 裁剪篇 層次·輪廓 Introduction of Cutting Series Scissors

剪髮工具 - 輪廓用髮剪類 4V+2 - 4V+4E  
Cutting Series Scissors 4V and 4E can be used to cut layers and create contour line in any angles and positions.

#### 斜剪 髮尾輕柔

POINT CUT : to create light, airy & soft hair ends effects

4V+2

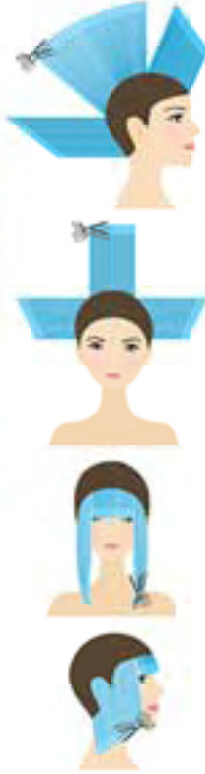


4V+2 任何角度及位置剪髮  
to cut in any angles and positions

#### 橫剪 髮尾豐厚效果專用

HORIZONTAL CUT : to create one-length, full and geometry hair ends effects

4V+4E



4V+4E 任何角度及位置剪髮  
to cut in any angles and positions

### 3.2 調整髮量 調整髮量

#### Introduction of **Texturizing** Series Scissors

調整髮量系列調整髮型 4Ea、4Eb、4Ec 調整髮型並提供髮型再設計的互鎖調整功能。

3 keys of 4Ea, 4Eb, 4Ec are for texturization handling and to reshape soon arts by customers themselves at any moment.

Key1

貼頭皮處理

Texturize NEXT TO THE SCALP

4Ea



貼頭皮處理 Texturize next to the scalp



功能：去除過多的髮量(髮量過多)  
**Functions:** 1. Remove redundant hair completely  
 (Too big hair volume)

Key2

髮根處理

Texturize AT HAIR ROOTS

4Ea-4Eb-4Ec



髮根處理 Texturize at hair roots



功能：1. 支撐  
 2. 調整髮根至髮尾量感

使用髮型：4Ea: 髮量少  
 4Eb: 髮量適中  
 4Ec: 髮量多

**Functions:** 1. Support  
 2. Adjust the spacing from hair roots to hair ends

**Used Mode:** 4Ea: Less hair volume  
 4Eb: Medium hair volume  
 4Ec: More hair volume

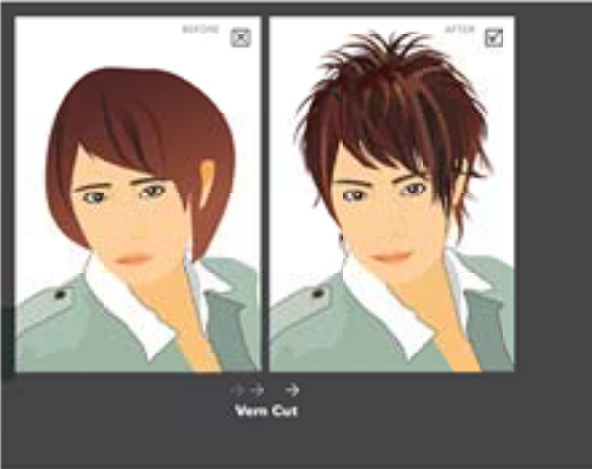
### 3.3 造型剪 燙髮 Introduction of **Styling Series Scissors**

造型用造型剪4Ed - 4Ee  
 橫切可創造強烈特殊效果  
 斜切可創造輕柔效果

The Styling Series Scissors, 4Ed and 4Ee, can be used in  
**Horizontal cut** to create strong and special effects  
**Slanting cut** to create soft and fragmental effects

Used Mode : 4Ed : Less hair volume  
 4Ee : More hair volume

4Ed + 4Ee



Key3

4Ea-4Eb-4Ec

髮中風量  
Texturize AT THE MIDDLE OF THE HAIR



髮中風量 Texturize at the middle of the hair

功用：1. 控制風向  
2. 調整髮中間髮尾風感

Functions：1. Control the direction of the hair flow  
2. Adjust the waving from the middle of the hair to the hair ends

使用型態：4Ea: 髮量少  
4Eb: 髮量適中  
4Ec: 髮量多

Used Mode：4Ea: Less hair volume  
4Eb: Medium hair volume  
4Ec: More hair volume



Key4

髮尾風量  
Texturize AT HAIR ENDS

4Ea-4Eb-4Ec



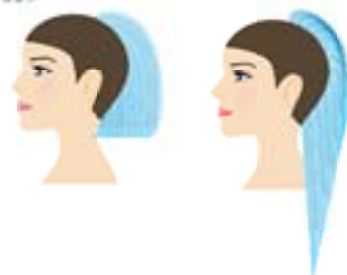
髮尾風量 Texturize at hair ends

功用：1. 柔化  
2. 調整髮尾風感

Functions：1. Create soft & light effects  
2. Adjust the waving at the hair ends

使用型態：4Ea: 髮量少  
4Eb: 髮量適中  
4Ec: 髮量多

Used Mode：4Ea: Less hair volume  
4Eb: Medium hair volume  
4Ec: More hair volume



關鍵點 Key5

4Ea+4Eb+4Ec

密集式調量與調剪

INTENSIVE Texturization and Texturizing to cut



密集式調量與調剪 Intensive Texturization and Texturizing to cut



密集式調量與調剪 Intensive Texturization and Texturizing to cut



Functions of

Functions of int

Acc



**調整功用：** 創造多層次空間感的髮型，可採多點調整(密集調於髮根至髮尾多個位置)，依所需的髮量及髮型效果選擇一支，二支或三支剪刀來組合使用

**調整功用：** 密集調整後，於髮尾定點多次咬合，創造自然無刀痕髮尾效果

**使用型號：** 4Ea: 髮量少  
4Eb: 髮量適中  
4Ec: 髮量多

**依量感需要，可用：** 二支組合：4Ea+4Eb、4Ea+4Ec、4Eb+4Ec  
三支組合：4Ea+4Eb+4Ec

**of intensive texturization :** Create a hairstyle with multi-layers and extensity by texturizing at multiple points, (to texturize intensively at multiple locations from hair root to hair ends), then choose to work with the combination of one, two or three pairs of scissors according to the demanded hair volume and hairstyle effects.

**Intensive texturizing to cut :** After using intensive texturizing to cut and do the repeated cutting at a certain position in the hair end, it creates natural effects in hair ends without hard lines.

**Used Mode :** 4Ea : Less hair volume  
4Eb : Medium hair volume  
4Ec : More hair volume

**According to different needs of effective designs, another alternative is :** Combination of two pairs: 4Ea+4Eb, 4Ea+4Ec, 4Eb+4Ec  
Combination of three pairs: 4Ea+4Eb+4Ec